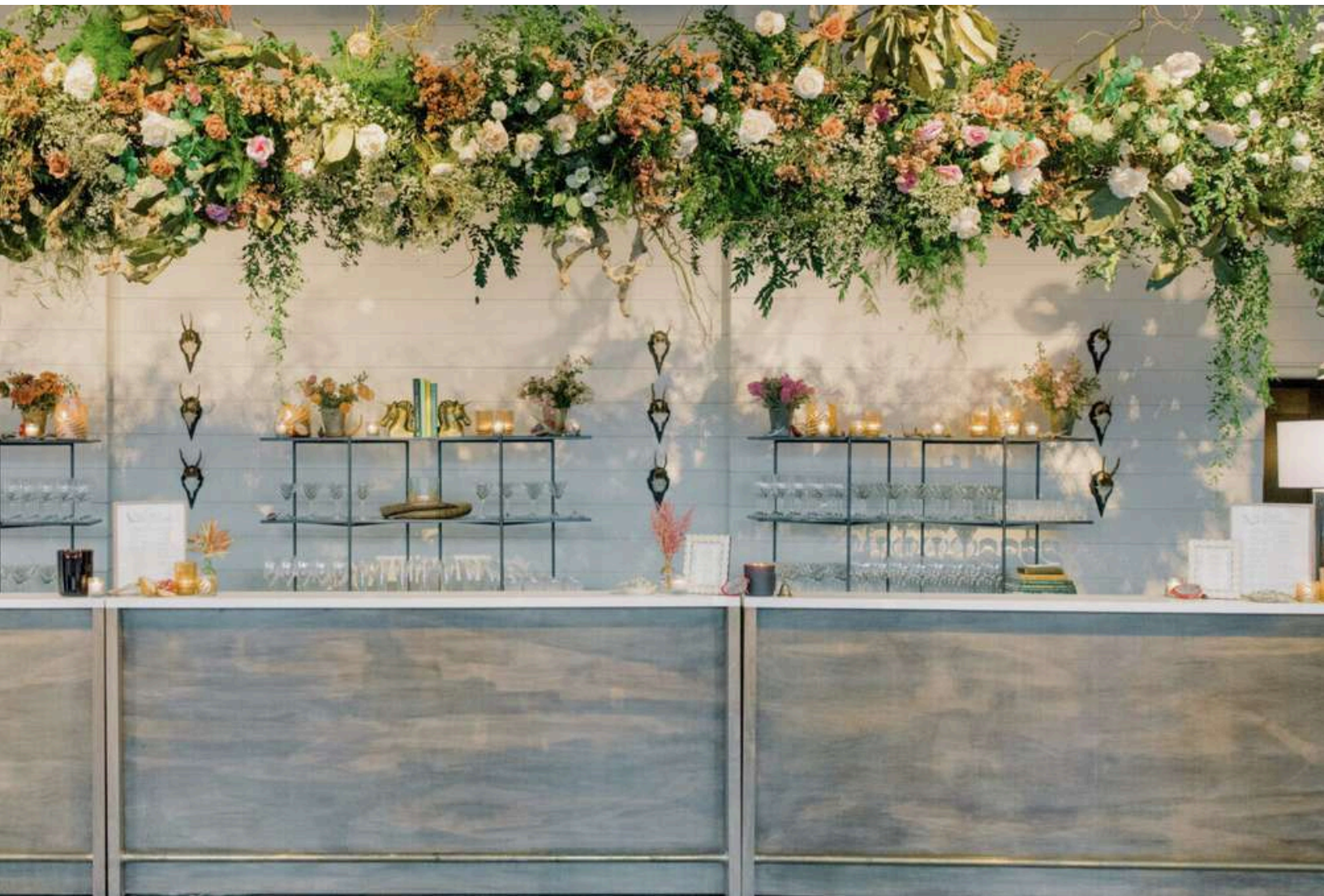




# BEVERAGE MANAGEMENT



---

[www.beveragemgmt.com](http://www.beveragemgmt.com)  
(334) 734-2468

---



## **OUR MISSION**

Our mission is to safely and efficiently provide beverage solutions throughout the hospitality industry. We currently offer solutions for every type of event in the world through our innovative safety and efficiency systems. We are Safe, Professional, and Responsible.

## **SAFETY & RESPONSIBILITY**

Alcohol safety and responsible consumption of alcohol is the utmost priority of Alcohol Beverage Control Boards around the country, which is why, ABC Board exclusively recommend B&B to provide safe drinking environments. All B&B bartenders are trained in alcohol safety and responsible distribution of alcohol. B&B President, Bobby Greenawalt, is both on the board and the acting VP for the American Beverage Licensees and is President of the Alabama Beverage License Association. He works very closely with these two organizations along with many state ABC Boards to increase safety and decrease liabilities in alcohol markets around the country.




# COMPLETE BEVERAGE SOLUTIONS

B&B Beverage Management is a part of the Greenawalt Hospitality Group, an event management solution firm, dedicated to finding solutions and supplies for your event or business services!

B&B Beverage Management is a food and beverage management company that professionally and responsibly serves guests at various functions. With over 15 years in the beverage alcohol industry, we have extensive knowledge and experience that we utilize to make each event run smoothly.

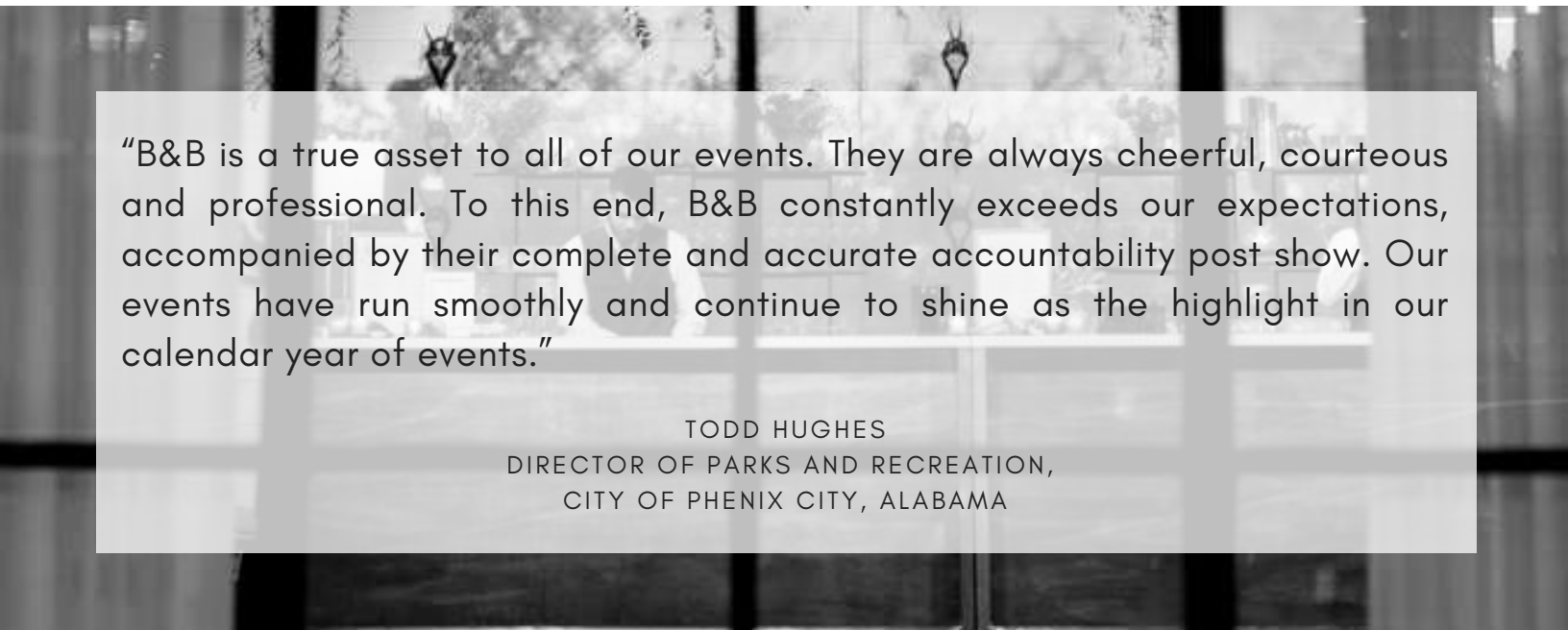







"The quality of service and attention to detail that B&B Beverage Management provides is best in class. Our sponsors, guests, and fans were very pleased with the experience provided at a competitive price. They run a smooth and efficient operation on all fronts and are a pleasure to do business with! Great TEAM players."

JONATHAN ROMEO  
TOURNAMENT DIRECTOR  
PGA TOUR BARBASOL CHAMPIONSHIP



"B&B is a true asset to all of our events. They are always cheerful, courteous and professional. To this end, B&B constantly exceeds our expectations, accompanied by their complete and accurate accountability post show. Our events have run smoothly and continue to shine as the highlight in our calendar year of events."

TODD HUGHES  
DIRECTOR OF PARKS AND RECREATION,  
CITY OF PHENIX CITY, ALABAMA



"We have been most impressed with B&B's professionalism. Everything from uniforms, caliber of front line and administrative staff to their processes and structure.... they are on top of things. It is comforting to know your brand will be represented well and you can rely on them to help you run a top-notch operation. As we have grown and ventured into new services, B&B has been a partner in these endeavors, they have been right beside us, evaluating and discussing the best paths."

JOE SALING  
DIRECTOR OF VISITOR EXPERIENCE  
VULCAN PARK & MUSEUM

# TABLE OF CONTENTS

## SERVICES

- Open Bar Packages | 8
- Consumption Bar Packages | 9
- À La Carte Packages | 10
- Cash Bars | 10
- Additional Services | 10
- Refreshment and Mixers Packages | 11
- Bartender Staffing | 12

## PRODUCTS

- Beer | 14
- Wine | 14
- Bubbles | 14
- Liquor | 15
- Mixers | 15

## SIGNATURE COCKTAILS

- Vodka | 18-19
- Gin | 20-21
- Rum | 22
- Tequila | 23
- Whiskey | 24-25
- Other | 26-27

## RENTALS

- Bars | 30-33
- Shelving | 34-36
- Towers | 37-38
- Glassware | 39-40

**ADDITIONAL EVENT SOLUTIONS 41-42**

A close-up photograph of a bartender's hands pouring a vibrant pink liquid through a metal strainer into a clear glass filled with ice. The background is a blurred bar setting with various bottles and equipment.

## SERVICES

Open Bar Packages | 8

Consumption Bar Packages | 9

À La Carte Packages | 10

Cash Bars | 10

Additional Services | 10

Refreshment and Mixers Packages Packages | 11

Bartender Staffing | 12



# OPEN BAR PACKAGES

The worry-free package. Never worry about limits, cash bars, or having to close the bar. Staffing, equipment rentals, plastic cups, napkins, straws, and other supplies are priced out accordingly plus the per person price of the open bar.

## **PACKAGE #1**

Beer & Wine

## **PACKAGE #2**

Beer, Wine, Spirits

## **PACKAGE #3**

Beer, Wine, Spirits, & Signature Drink

*\* Pricing may vary depending on event details*

*\* Signature Cocktails & Toasts are at an additional cost*

*\* If more guests attend than guaranteed, fees will apply*



# CONSUMPTION BAR

The most economically friendly package for clients on a budget. Staffing, equipment rentals, plastic cups, napkins, straws, and other supplies are priced out accordingly and then you are billed for the products consumed. You have the choice of an unlimited tab or you can set a limit.

## BEER & WINE

### Labor & Supplies Per Person Range

0-50 Guests  
51-100 Guests  
101-200 Guests  
201-300 Guests

## BEER, WINE, & LIQUOR

### Labor & Supplies Per Person Range

0-50 Guests  
51-75 Guests  
76-150 Guests  
151-225 Guests  
226-300 Guests

*\*Pricing may vary depending on event details*

*\*This option is venue/license specific*

*\*Pricing includes house products only*

*\*Requested products not on the house products list must be purchased in full*

*\*Soft drinks and water can be put on the consumption tab*

*\*Signature Cocktails and Champagne Toasts are available at an additional cost*





# À LA CARTE PACKAGES

Know exactly what you want? Order from our À La Carte menu and piece together the perfect beverage package for your event. Staffing, equipment rentals, plastic cups, napkins, straws, and other supplies are priced out accordingly along with your chosen products. Mixers & Garnishes are not included in this package and will be added to your invoice. Keg purchases will include additional equipment rentals.

## CASH BAR

Do you want a cash bar for your upcoming event? The base pricing from the Consumption Packages will be your only cost. Your guests will pay for their own beverages as they order from the bar. This option is only offered at licensed venues.



## ADDITIONAL SERVICES

Signature Cocktails  
Champagne Toasts  
Tableside Wine Service  
Passed Beverages  
Bloody Mary/Mimosa Bars  
Bridal/Groom Suite Orders

# REFRESHMENT AND MIXERS PACKAGES

Serve your guests unlimited non-alcoholic beverages with our worry-free packages. We offer a variety of non-alcoholic beverages including any mixers needed for your À La Carte alcoholic purchases. These are priced per-person.

## TEA, LEMONADE, & WATER

Milo's Sweet/Unsweet Tea & Lemonade  
Water

## SOFT DRINKS & WATER

Coca-Cola Diet Coke Sprite Ginger Ale  
Water

## TEA, LEMONADE, SOFT DRINKS, & WATER

Coca-Cola Diet Coke Sprite Ginger Ale  
Milo's Sweet/Unsweet Tea & Lemonade  
Water

## MIXER PACKAGE

Water Coca-Cola Diet Coke Sprite Ginger Ale  
Tonic Water Soda Water  
Cranberry Juice Orange Juice Pineapple Juice  
Lemon Garnish Lime Garnish

## COFFEE PACKAGE

Coffee Sugar Creamer

## COFFEE & HOT TEA PACKAGE

Coffee Variety Teas Sugar Creamer





# BARTENDER STAFFING

Bartender staffing is ideal when you have already purchased some of your product or need to piece portions of your event together.

## WHAT TO EXPECT

Our bartenders arrive at least two hours prior to your event start time. Bartenders will be wearing one of several uniform types that will be presented to you by our Accounts Team.

Staff will be courteous, professional, and hospitable to you and your guests. At the end of your bartender's service time, they will clean up their area, pack up your product, and will check out with you before they depart.

## ARE YOUR BARTENDERS LICENSED?

Every bartender that works for B&B is TIPS certified, which includes state licensure, for each state they work. They are also trained internally on responsible serving, ID verification, and preventing overconsumption.

B&B is recommended by ABC Boards across the country for providing safe drinking environments.



## PRODUCTS

Beer | 14

Wine | 14

Bubbles | 14

Liquor | 15

Mixers | 15



## BEER

### HOUSE

Bud Light, Coors Light, Miller Lite, Michelob Ultra

### PREMIUM

White Claw Mango, Mango Cart, Cahaba Blonde, Stella Good People IPA, Blue Moon

## WINE

### HOUSE

Chardonnay, Pinot Grigio, Sauvignon Blanc, Moscato, Cabernet Sauvignon, Merlot, Pinot Noir

### PREMIUM -

Cabernet Sauvignon, Pinot Noir, Merlot, Chardonnay, Sauvignon Blanc, Rosè, Pinot Gris



## BUBBLES

### HOUSE

Brands Vary by Location

### PREMIUM

Brands Vary by Location



## LIQUOR

### CALL

Tito's, Tanqueray, Captain Morgan White, Jack Daniels, Crown Royal, Dewars, Lunazul Blanco

### PREMIUM

Grey Goose, Maker's Mark, Woodford Reserve, Hendricks, Premium Cognac, Patron Silver

### RTD ( READY TO DRINK COCKTAILS)

High Noon Peach  
High Noon Lime

### MIXERS

Coca-Cola, Diet Coke, Sprite, Ginger Ale, Tonic Water, Soda Water, Sour Mix, Cranberry Juice, Orange Juice, Pineapple Juice, Lemon Garnish, Lime Garnish

*\*If you would prefer different products other than what is listed, please let your account manager know. We are able to get these items as long as they are available and locally distributed. These items would need to be pre-purchased as an à la carte product.*







Two glasses of pink cocktails with ice and blackberries on skewers. The background is decorated with pink and purple flowers.

## SIGNATURE DRINKS

Vodka | 18-19

Gin | 20-21

Rum | 22

Tequila | 23

Whiskey | 24-25

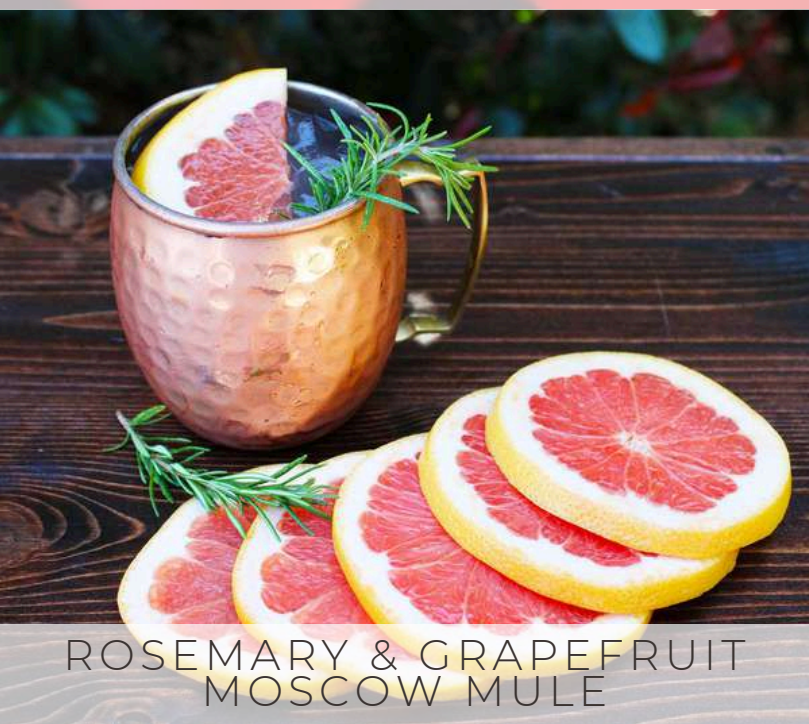
Other | 26-27

*\*All cocktails also available as a "mocktail"*

# VODKA COCKTAILS



COSMO'S COSMO



ROSEMARY & GRAPEFRUIT  
MOSCOW MULE



SPRINGTHYME  
SOUR



BLOOD ORANGE SPRITZER



VANILLA PEAR MARTINI



SPIKED LEMONADE BAR



ROSEMARY CRANAPPLE MULE



ESPRESSO MARTINI

## ADDITIONAL OPTIONS

- Strawberry Mint Mule
- Peppermint Chocolate Martini
- Lavender Lemon Drop
- Classic Martini
- Salty Dog
- And MANY more...

# GIN COCKTAILS



CARDAMON & THYME FIZZ



GARDEN CITY



ROSE SPRITZ



LAVENDER  
BEES KNEES



BLACKBERRY ROSEMARY  
BRAMBLE



VANILLA & PEAR GIN FIZZ

## ADDITIONAL OPTIONS

---

- French 75
- Blood Orange Spritzer
- Vanilla Pear Tini
- Tom Collins
- Bees Knees
- And MANY more...



GRAPEFRUIT FRENCH 75

# RUM COCKTAILS



PINEAPPLE COCONUT COOLER



PINEAPPLE UPSIDE  
DOWN CAKE



BLUEBERRY  
MOJITO



RASPBERRY  
MARTINI

## ADDITIONAL OPTIONS

- Strawberry Kiwi Daiquiri
- Dark & Stormy
- Hurricane
- "No"Jito
- Pineapple Passionfruit Daiquiri
- And MANY more...

# TEQUILA COCKTAILS



SPICY PALOMA



SPICY BLACKBERRY MARGARITA



PINE- PEPPER CRUSH



COCONUT MARGARITA

## ADDITIONAL OPTIONS

- Skinny Margarita
- Cucumber Margarita
- Watermelon Jalapeno Margarita
- And MANY more...

# WHISKEY COCKTAILS



BLUEBERRY MINT  
JULEP



SMOKEY OLD FASHIONED



THYME SOUR





SPICED APPLE TODDY



SAGE GOLD RUSH



SPICED APPLE SOUR

## ADDITIONAL OPTIONS

- Whiskey Peach Smash
- Strawberry Mint Mule
- Mint Julep
- Blackberry Rosemary Bramble
- Rosemary Grapefruit Mule
- And MANY more...

# OTHER COCKTAILS



GINGERBREAD  
WHITE RUSSIAN



APEROL SPRITZ



MIMOSA BAR



SPICY MATCHA MARGARITA



CHAMOMILE HONEY GIN  
SOUR



BLUSHING BRIDE

## ADDITIONAL OPTIONS

---

- Strawberry Lemonade
- Pumpkin Spiced Mule
- Cherry Chocolate Martini
- Peach Basil Mule
- Mocktails
- And MANY more...



A large collection of champagne flutes is arranged on a wooden table. The glasses are organized into several rows, with the front rows being more densely packed. The background is a blurred wedding reception hall.

**RENTALS**

Bars | 30-31

Shelving | 32

Towers | 33

Glassware | 34-35



BARS





### 4 FOOT BAR (WHITE FINISH)

Height: 3ft 6in  
Width: 4ft

### STANDARD BAR KIT

6ft Serpentine  
6ft Straight  
8ft Straight



### DRAFT

Height: 7ft 6in  
Width: 9ft 8in





### **PREMIUM WOODEN HERRINGBONE**

Height: 3ft 9in  
Length: 6ft 5in  
Depth: 2ft



### **PREMIUM WOODEN BAR (WHITE FINISH)**

Height: 3ft 9in  
Length: 6ft 5in  
Depth: 2ft

### **PREMIUM RUSTIC**

Height: 3ft 9in  
Length: 6ft 5in  
Depth: 2ft









SHELVES





**WHITE**

Height: 4ft 8in

Width: 4ft 8in

Depth: 15.5in

**GOLD (SET OF TWO)**

Height: 5ft 11in

Width: 2ft 5in

Depth: 14in

**INDUSTRIAL**

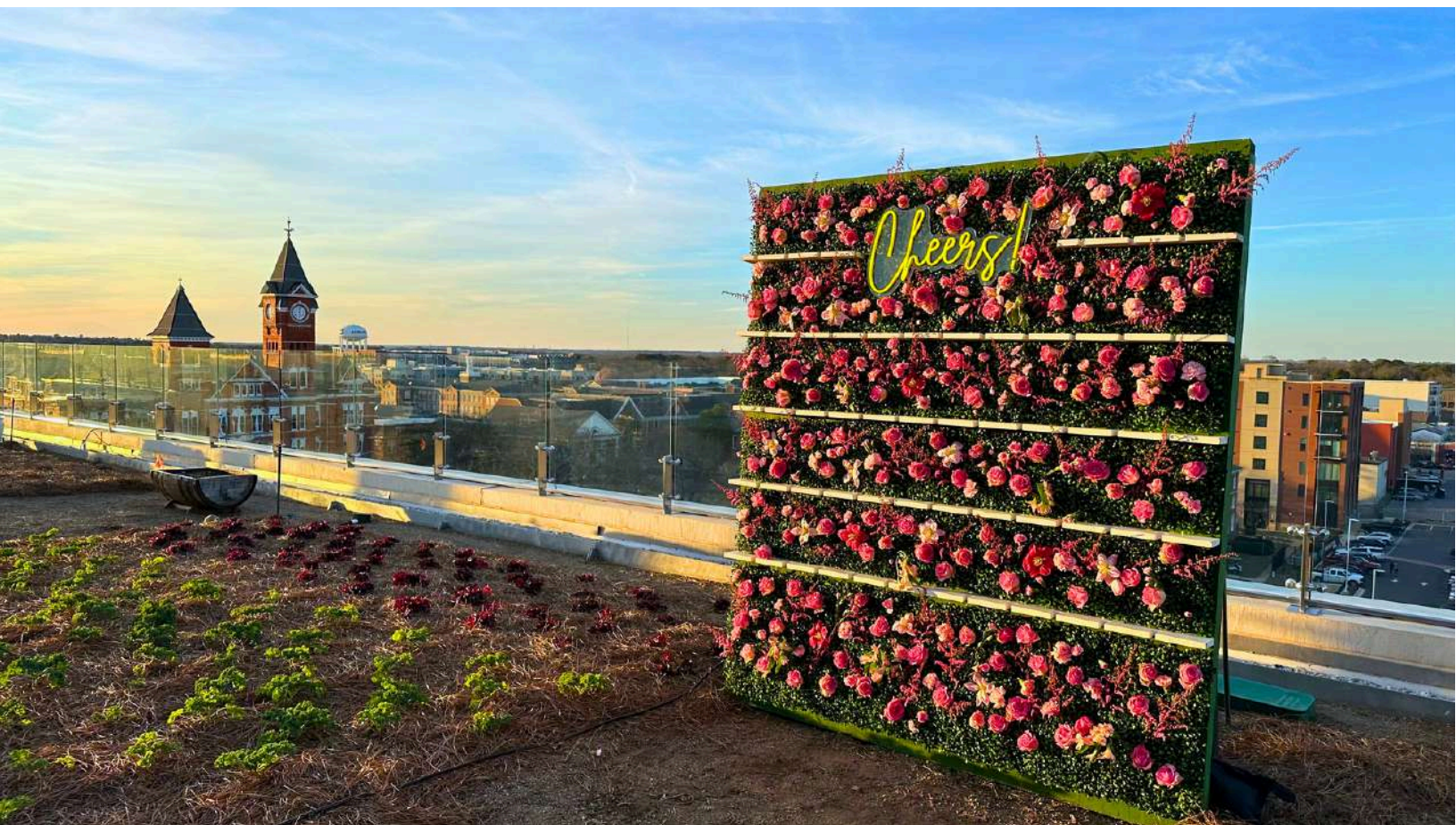
Height: 6ft 6in

Width: 5ft

Depth: 13.5in



# CHAMPAGNE WALL



## CHAMPAGNE WALL

Height: 7ft  
Width: 6ft  
Depth: 39in

## CAPACITY

With Neon Sign : 50 Glasses  
No Neon Sign : 55 Glasses



TOWERS





**3 TIER**

Height: 4ft 4in  
Width: 2ft 7in

**5 TIER**

Height: 6ft 7in  
Width: 2ft 6in

**WHITE TABLETOP**

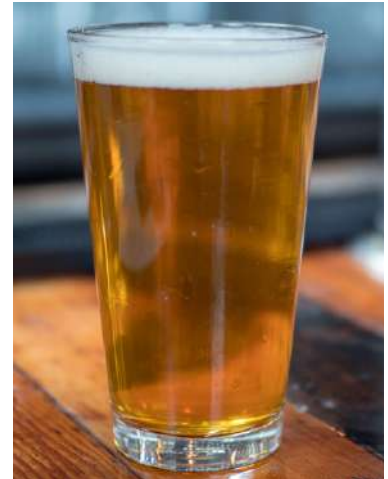
Height: 2ft 6in  
Width: 2ft 5in



# GLASSWARE



COUPE GLASS



PINT GLASS



MARTINI GLASS



WINE GLASS



CHAMPAGNE FLUTE



ROCKS GLASS

# GLASSWARE



COLLINS GLASS



GOBLET GLASS

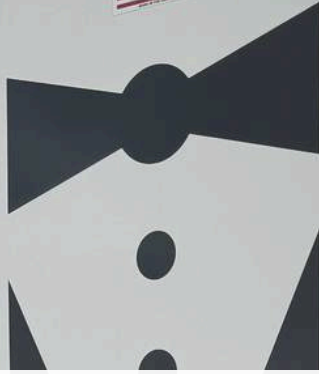


STEMLESS WINE

*\*Glassware not rented individually. Quantities and Pricing available on request from your Account Manager*



5B02



GREENAWALT  
HOSPITALITY



EVENT  
RESTROOM  
TRAILERS

*Elevated Elegance. Every Time.*

Satellite Service  
INDIANA  
S087199  
GREENAWALT  
HOSPITALITY

307

 GREENAWALT  
HOSPITALITY

Cold Storage Rentals & Ice Delivery  
  
EVENT ICE  
[www.eventice.com](http://www.eventice.com)

*Cold Storage Rentals & Ice Delivery*

 POLAR KING  
MOBILE  
GREENAWALT  
HOSPITALITY

# GREENAWALT HOSPITALITY



---

Company Headquarters:  
Auburn, Alabama  
[booking@beveragemgmt.com](mailto:booking@beveragemgmt.com)  
[www.beveragemgmt.com](http://www.beveragemgmt.com)  
(334) 734-2468

---



## Photo Credits

Haint Blue Collective  
Alabama Wedding Magazine  
Twenty Oaks Photography  
Piper Vine  
Happy Cocktail Company  
B&B Beverage Management